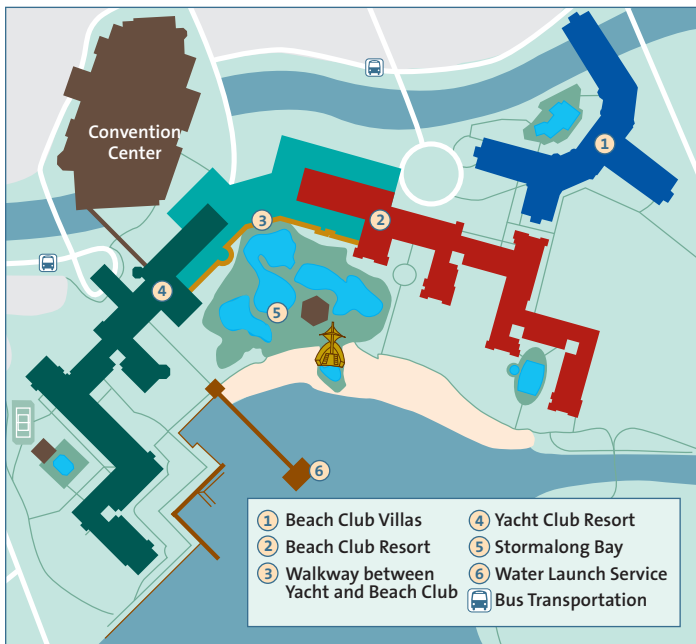


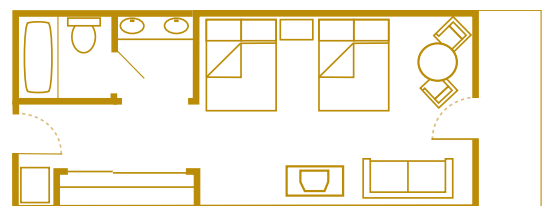
# Disney's Yacht & Beach Club Resorts

The elegant lakeside accommodations of this sand-and-surf motif Disney Deluxe Resort and Disney Deluxe Villa Resort will transport your clients to a lazy 1870s mid-Atlantic beach holiday. *Disney's Beach Club Villas* offer spacious accommodations with plenty of room for everyone.



## Room Accommodations

- 1,170 rooms, 27 suites, 282 villas
- Standard rooms accommodate up to five Guests, plus one child under age 3 in a crib.
- All rooms have either two queen-size beds or one king-size bed and a day bed, and private balcony.
- Guests choosing **Club Level** accommodations at the *Regatta* and *Stone Harbor* Clubs receive personalized concierge service and lounge with continental breakfast, midday snacks and evening wine, hors d'oeuvres, cordials and desserts.



*Typical Standard Room with 2 queen-size beds and 1 day bed, 400 sq. ft. Accommodates up to five Guests plus one child under age 3 in a crib.*

# DISNEY'S YACHT & BEACH CLUB RESORTS



Standard Room at Disney's Yacht Club Resort



2-Bedroom Suite at Disney's Beach Club Resort



1-Bedroom Suite at Disney's Beach Club Resort



2-Bedroom Turret Suite at Disney's Yacht Club Resort



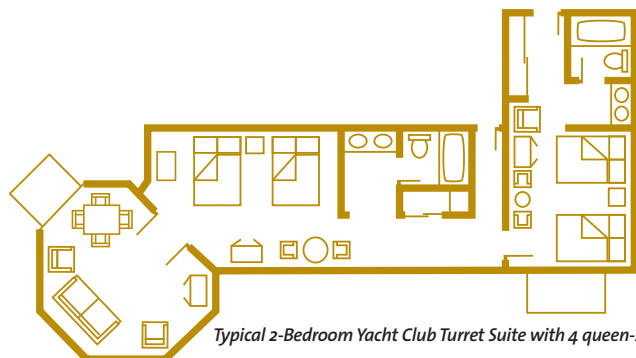
Typical 1-Bedroom Beach Club Suite with 1 king-size bed and 1 day bed, 571 sq. ft.

Accommodates up to three Guests plus one child under age 3 in a crib.



Typical 2-Bedroom Beach Club Suite with 1 king-size bed, 2 queen-size beds and 1 day bed, 1,095 sq. ft.

Accommodates up to seven Guests plus one child under age 3 in a crib.



Typical 2-Bedroom Yacht Club Turret Suite with 4 queen-size beds, 1,160 sq. ft.

Accommodates up to eight Guests plus one child under age 3 in a crib.

## Dining

### Signature Dining

- *Yachtsman Steakhouse* – Specializing in oak-grilled steaks, poultry, seafood, vegetarian entrées and more for dinner

### Table-Service Dining

- *Captain's Grille* – Breakfast, lunch and dinner cafe-style restaurant that offers American dishes.
- *Cape May Cafe* – An all-you-care-to-enjoy seafood dinner buffet... and much more! Crab legs, mussels and clams freshly steamed center stage, as well as carved meats, ribs, salads and pastas.
- *Beaches & Cream Soda Shop* – Lunch and dinner featuring snacks and a classic American soda fountain

### Disney Character Dining

- *Beach Club Breakfast Buffet at Cape May Cafe* – All-you-care-to-enjoy breakfast buffet

### Quick-Service Dining

- *Beach Club Marketplace* – This hometown market and bakery features pastries, salads and gourmet sandwiches.
- *Hurricane Hanna's Waterside Bar & Grill* – Lunch, dinner and snacks

### Other Dining Options

- Lounges serving appetizers, room service, and the nearby *Disney's BoardWalk* Entertainment District offers additional dining options



# Disney's Beach Club Villas

## Villa Accommodations

**Two-Bedroom Villas** accommodate up to eight Guests, plus one child under age 3 in a crib, and offer a fully equipped kitchen, master bedroom, second bedroom, two full bathrooms, washer and dryer, DVD player and private porch or balcony.

**One-Bedroom Villas** accommodate up to four Guests, plus one child under age 3 in a crib, and offer a fully equipped kitchen, king-size bed in master bedroom and queen-size sleeper sofa in living room, washer and dryer and private porch or balcony.

**Deluxe Studios** accommodate up to four Guests, plus one child under age 3 in a crib, and have a kitchenette, one queen-size bed, double-size sleeper sofa and private porch or balcony.



### Recreation

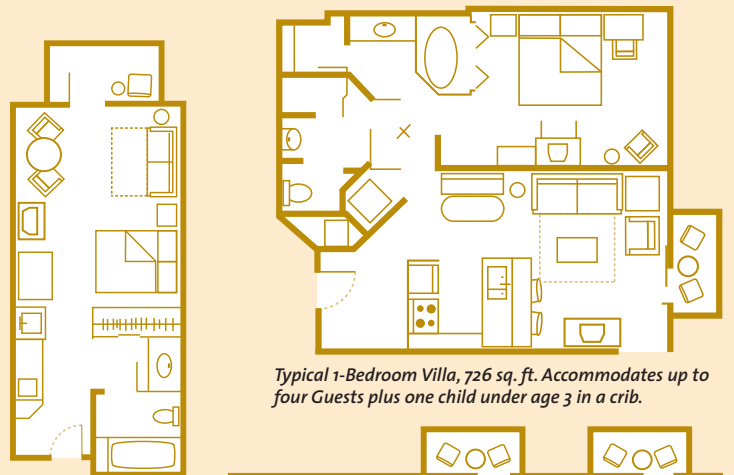
- Three-acre aquatic playground features heated sand-bottom pool, *Stormalong Bay*, themed waterslide, whirlpools, heated leisure pools, children's pool, health club
- Health club, tennis, fishing, marina watercraft rental, bike rental, arcade, hair salon and recreation activities including Disney Movies Under the Stars and new balance® RUNNING TRAIL

### Just for Kids

- *Sandcastle Club* – A fun night of supervised activities, including arts and crafts, Disney movies, video games and more. Available from 4:30 p.m. until midnight. Dinner and a snack are included in the cost of the service.

### Transportation

- Within walking distance of *Epcot®* and *Disney's Hollywood Studios®*
- Water launch service to *Epcot®*, *Disney's Hollywood Studios®* and other select *Disney Resort* hotels
- Bus service to other *Walt Disney World®* Resort locations



Typical Deluxe Studio, 356 sq. ft. Accommodates up to four Guests plus one child under age 3 in a crib.

